

# Product Information

## Solenoid valve / Float valve NC, DN 10 two chambers in line



### A.u.K. Müller

Solenoid valves  
Control valves  
Special valves and systems

A.u.K. Müller GmbH & Co. KG  
Dresdener Str. 162  
D-40595 Düsseldorf/Germany

Tel.: +49 211 7391-0  
Fax: +49 211 7391-281

e-mail: [info@akmueller.de](mailto:info@akmueller.de)  
Internet: [www.akmueller.de](http://www.akmueller.de)

#### Series 21.010.226



#### Characteristics

- proportional behaviour (flow depends on position of float lever)
- servo-controlled
- normally closed (NC)
- long term performance capability
- easy to assemble and service
- solenoid replaceable while medium circuit remains untouched, solenoid rotatable 4 x 90°
- high operating safety through the use of high quality materials and 100% final testing of the products

#### Applications

- irrigation systems
- industrial appliances
- air conditioning
- pollution equipment
- dish washers
- washing machines
- water treatments

#### Description

Float valves are commonly used in industrial applications to maintain a constant level in a tank. For cleaning purposes the tank is often drained and the water supply has to be isolated to prevent the float valve automatically refilling the tank. By incorporating a normally closed servo-controlled solenoid valve upstream of the float valve, but in the same body, this acts as the shut off to the supply line. This combined valve allows other equipment connected to the same supply to remain in operation and also avoids the unintentional refill of the tank in the event of power failure.

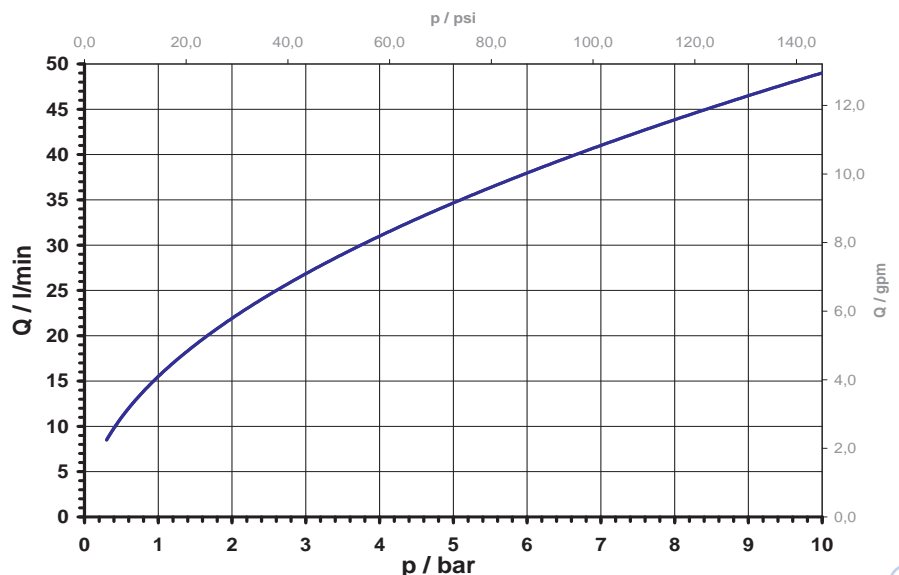
These valves have a two chamber, straight through body which can be manufactured with various connections.

Coil systems for all common voltage and frequency ranges are available.

The valve is rated to insulation class F to ensure electrical operating safety, although an additional integrated protective circuit can also be included.

By using high quality insulation materials, a continuous 100% duty cycle is possible. Corrosion of the inner parts of the valve which are exposed to the medium is prevented by using high specification stainless steel.

typical performance curve

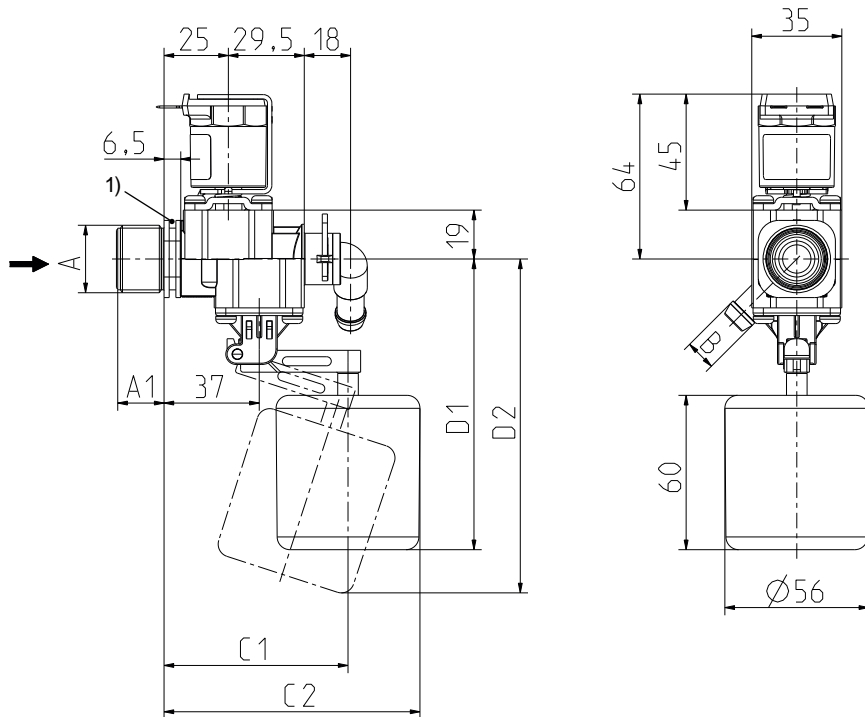


# Solenoid valve / Float valve NC, DN 10 two chambers in line



**A.u.K. Müller**

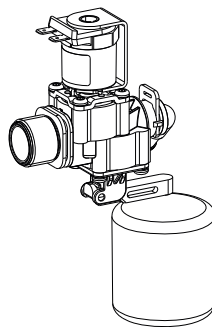
## Series 21.010.226



1) Fixing groove

## Materials

<b>Valve body</b>	PA 66, glass fibre reinforced
<b>Plunger guide</b>	stainless steel
<b>Plunger</b>	stainless steel
<b>Membrane and sealings</b>	EPDM
<b>Float cylinder</b>	PE-foam polystyrene on request
<b>Float lever</b>	POM
<b>Coil coating</b>	PBT, PET or epoxy resin
<b>Filter</b>	POM (in inlet) stainless steel on request



## Technical Data

<b>Type</b>	solenoid / float valve	
<b>Construction</b>	2/2-way, two chambers in line, servo-controlled	
<b>Function</b>	NC (normally closed)	
<b>Fitting position</b>	float pointing downwards	
<b>Media</b>	cold and heated potable water and physically and chemically similar media	
<b>T-Medium</b>	30 60	°C max. polystyrene °C max. PE
<b>T-Ambient</b>	as per T-Medium	
<b>DN</b>	10	mm
<b>p-Operating</b>	0,3 - 10	bar
<b>Cv-value</b>	15,5	l/min
<b>Flow regulator</b>	on request	
<b>Pressure surge</b>	according to EN 60730	
<b>Coil type</b>	MS.006, MS.024, MS.025	
<b>Nominal voltages</b>	220 - 240 110 110 - 127 24 12 24 12	V AC 50-60 Hz V AC 50 Hz V AC 60 Hz V AC 50/60 Hz V AC 50/60 Hz V DC V DC
	other voltages on request	
<b>Voltage tolerance</b>	+10% -15%	
<b>Duty cycle</b>	100%	
<b>Nominal power</b>	8,5 W	13 VA (AC only)
<b>Protection type</b>	IP 00 up to IP 68	
<b>Coil connections</b>	flat tabs 6,3 x 0,8 mm plug socket according to EN 175301-803 (IP65), several cable connections (IP67, IP68)	
<b>Insulation class</b>	F	according to EN 60730
<b>Protection class</b>	I	according to EN 60730 (for incorporation in class I)

## Options

Lever dimensions	a)	b)
<b>D1</b>	113	180
<b>D2</b>	131	203
<b>C1</b>	72	101
<b>C2</b>	100	129

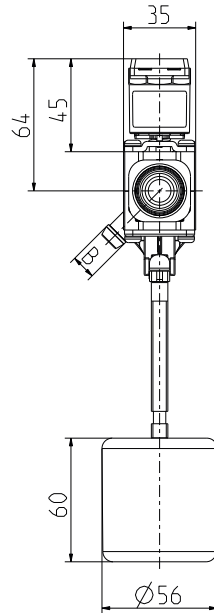
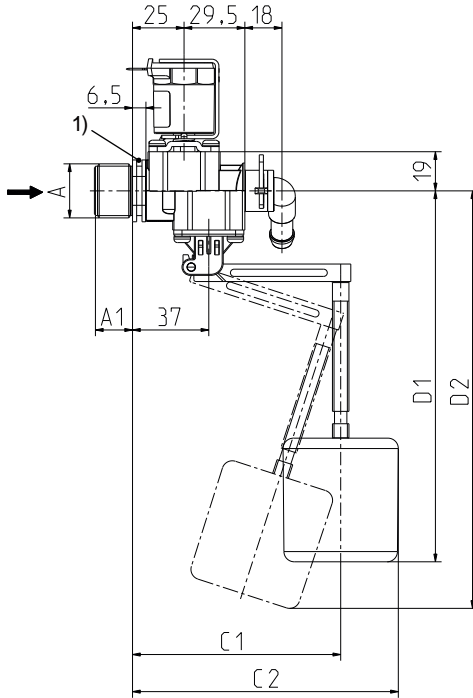


## Solenoid valve / Float valve NC, DN 10 two chambers in line

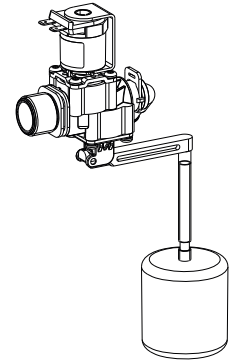


A.u.K. Müller

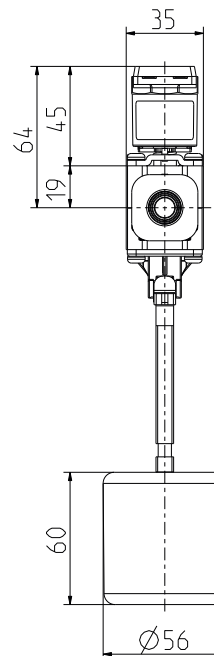
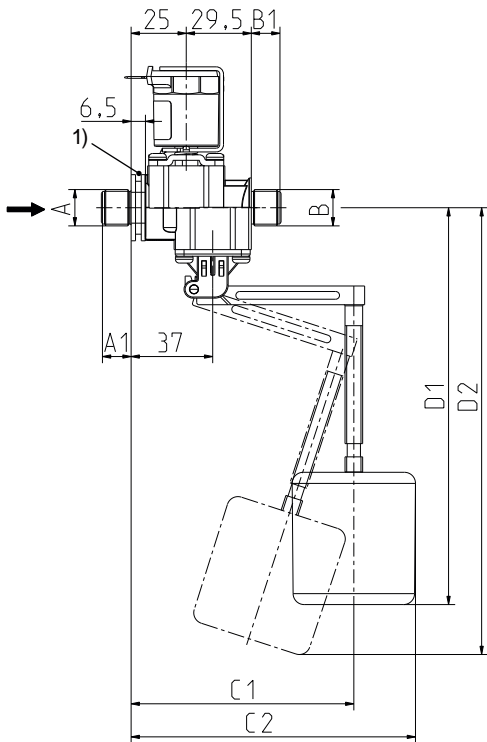
### Series 21.010.226



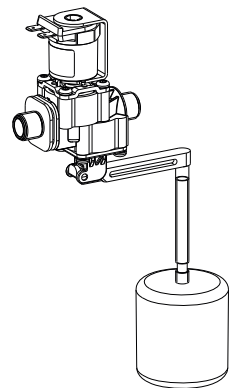
elbow



1) Fixing groove



straight



### Options

Material	Inlet		Outlet	
	Ø A	A1	Ø B	B1
<b>elbow</b>				
PA 66	G 3/4	18,0	12,0 nozzle	19,0
<b>straight</b>				
PA 66	G 3/8	13,0	G 3/8	13,0
PA 66	G 3/4	18,0	12,0 nozzle	17,0